



HAL
open science

Energy Efficiency Optimization in a Two-level Supply Chain Model: Incorporating Shortage Considerations

Hong-Nguyen Nguyen, Matthieu Godichaud, Lionel Amodeo

► **To cite this version:**

Hong-Nguyen Nguyen, Matthieu Godichaud, Lionel Amodeo. Energy Efficiency Optimization in a Two-level Supply Chain Model: Incorporating Shortage Considerations. The International Conference on Operations Research and Enterprise Systems (ICORES), Feb 2024, Rome, Italy. hal-04476650v2

HAL Id: hal-04476650

<https://utt.hal.science/hal-04476650v2>

Submitted on 4 Jun 2024

HAL is a multi-disciplinary open access archive for the deposit and dissemination of scientific research documents, whether they are published or not. The documents may come from teaching and research institutions in France or abroad, or from public or private research centers.

L'archive ouverte pluridisciplinaire **HAL**, est destinée au dépôt et à la diffusion de documents scientifiques de niveau recherche, publiés ou non, émanant des établissements d'enseignement et de recherche français ou étrangers, des laboratoires publics ou privés.

Computer Science & Digital Society

Hong-Nguyen Nguyen^{1,2,*}, Matthieu Godichaud¹, Lionel Amodeo¹



¹Computer Sciences and Digital Society Laboratory (LIST3N), University of Technology of Troyes, Troyes Cedex, France

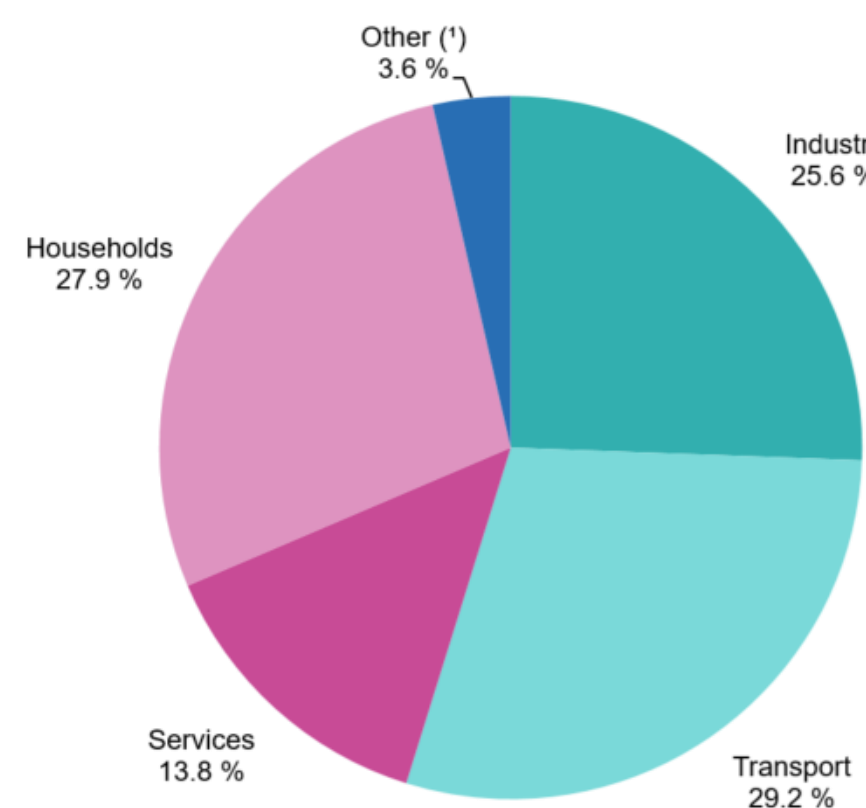
²Faculty of Project Management, The University of Danang, University of Science and Technology, Danang, Vietnam

*Corresponding author: hong_nguyen.nguyen@utt.fr

ENERGY EFFICIENCY Optimization in a Two-level SUPPLY CHAIN Model: Incorporating SHORTAGE Considerations

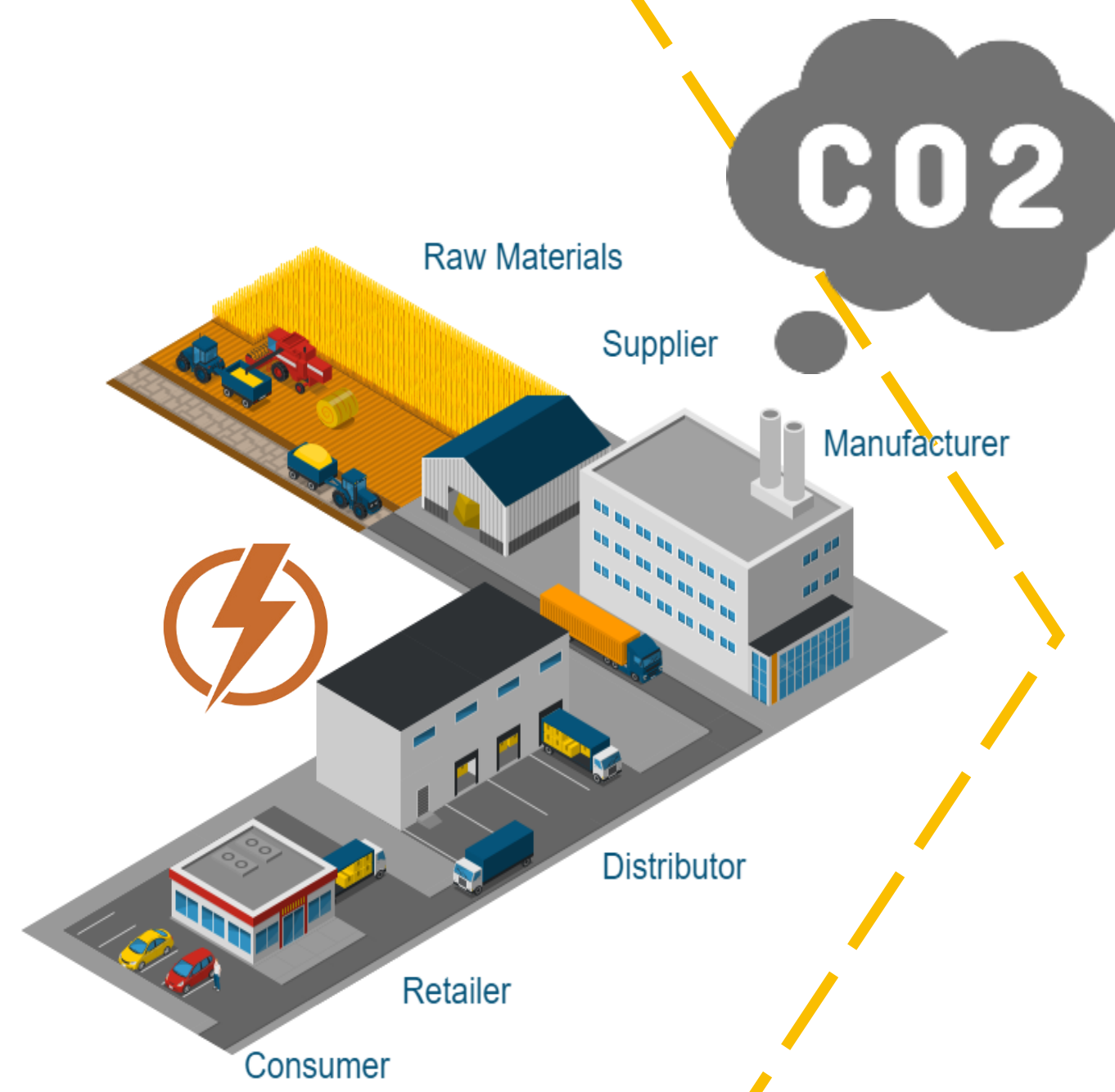
Introduction

Final energy consumption by sector, EU, 2021 (% of total, based on terajoules)



(*) International aviation and maritime bunkers are excluded from category Transport. Source: Eurostat (online data code: nrg_bal_c)

eurostat



Contributions

Ref.	Inventory model	No. of stages	OMS	Shortages	Energy aspects	CO ₂ aspects
Wu and Ouyang (2003)	EPQ/JELS	2	✓	✓	✓	✓
Zanoni et al. (2014)	EPQ	2	✓	✓	✓	✓
Biel and Glock (2016)	EPQ	2	✓	✓	✓	✓
Sarkar et al. (2018)	EPQ	1	✓	✓	✓	✓
Daryanto and Wee (2018)	EPQ	1	✓	✓	✓	✓
Taleizadeh et al. (2018)	EPQ	1	✓	✓	✓	✓
Taleizadeh et al. (2018)	EPQ/JELS	2	✓	✓	✓	✓
Marchi et al. (2019)	EPQ	1	✓	✓	✓	✓
Mishra et al. (2020)	EPQ	1	✓	✓	✓	✓
Nguyen et al. (2022)	EPQ	1	✓	✓	✓	✓
Nguyen et al. (2023b)	EPQ	1	✓	✓	✓	✓
Nguyen et al. (2023a)	EPQ	1	✓	✓	✓	✓
This study	EPQ/JELS	2	✓	✓	✓	✓

JELS: Joint economic lot sizing; OMS: optimizing of machine status.

- The integration of energy consumption and backorder concerns into a two-level inventory model;
- The resolution method to minimize the average total cost function including energy consumption cost;
- Optimization of production rate, maximum backordering quantity, number of shipments per batch, quantity transported per delivery and the production line status.

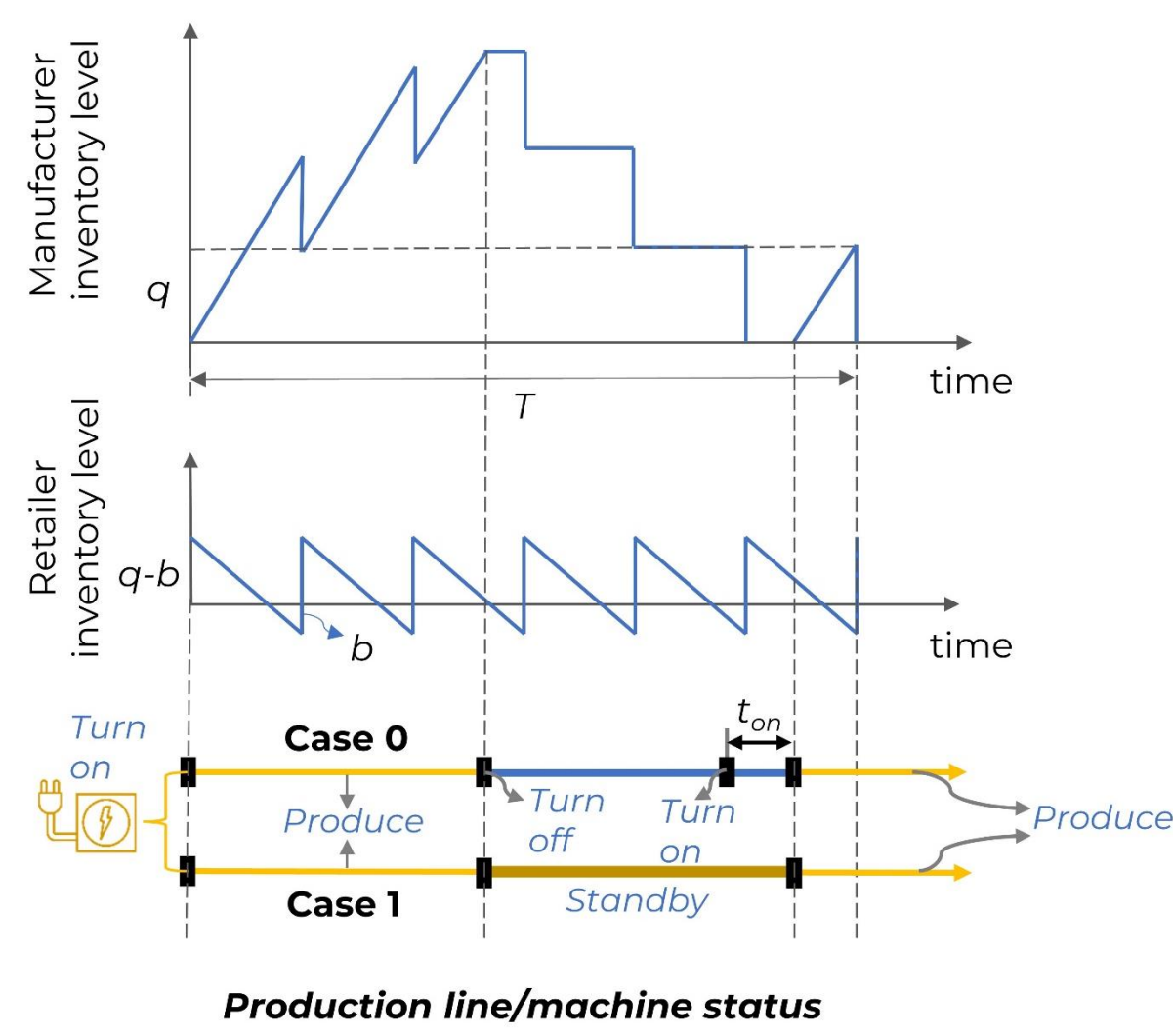
Modeling

Parameter

- D demand rate (unit/h)
- S_1 setup cost of the manufacturer (€/setup)
- S_2 order cost of the retailer (€/order)
- H_1 inventory holding cost of the manufacturer (€/unit.h)
- H_2 inventory holding cost of the retailer (€/unit.h)
- B shortage cost (€/unit.h)
- W idle power of the production line (kW)
- K energy consumption of the production line to produce one unit (kWh/unit)
- E energy cost (€/kWh)
- F multiplication factor for the power required during the setup of the production line
- t_{on} re-setup time of the production line (h)
- T cycle time (h)

Decision variables

- P production rate (unit/h)
- b The maximum backordering quantity at the buyer (unit)
- n The number of shipments per batch production run, a positive integer
- q quantity transported per delivery (unit/delivery)



Specific energy consumption from production [Gutowski et al., 2006]

$$SEC \left(\frac{kWh}{unit} \right) = \frac{W}{P} + K \quad (1)$$

Case 0: The production line is turned off/on

$$TC_0(P, q, n, b) = \underbrace{H_1 q \left[\frac{D}{P} + \frac{n}{2} \left(1 - \frac{D}{P} \right) - \frac{1}{2} \right]}_{\text{Manufacturer}} + \underbrace{\frac{D}{nq} S_1 + \frac{DS_2}{q} + \frac{H_2(q-b)^2}{2q} + \frac{Bb^2}{2q}}_{\text{Retailer}} + \underbrace{\left(\frac{W}{P} + K \right) DE + \frac{DFW t_{on} E}{nq}}_{\text{Energy cost}} \quad (2)$$

Case 1: The production line is kept on standby

$$TC_0(P, q, n, b) = \underbrace{H_1 q \left[\frac{D}{P} + \frac{n}{2} \left(1 - \frac{D}{P} \right) - \frac{1}{2} \right]}_{\text{Manufacturer}} + \underbrace{\frac{D}{nq} S_1 + \frac{DS_2}{q} + \frac{H_2(q-b)^2}{2q} + \frac{Bb^2}{2q}}_{\text{Retailer}} + \underbrace{(W + KD)E}_{\text{Energy cost}} \quad (3)$$

The overall Mixed-integer nonlinear programming (MINLP) problem for both cases can be summarized as follows

Minimize $TC_i(P, q, n, b)$

s.t.

$$P_{min} \leq P \leq P_{max} \quad (4)$$

$$t_{on} < \frac{nq}{D} \left(1 - \frac{D}{P} \right) \quad (5)$$

where the indicator i stands for the two options of the production line during the non-production phase which takes the values of 0 and 1. The constraint (5) is for re-setup time in when the production line in turned off/on (case 0).

Conclusion and perspectives

Conclusion: This study integrates energy consumption optimization into a two-level supply chain production system, consisting of a single manufacturer and a single retailer. We analyze the energy consumption of the system through two phases of the manufacturer's production line: the production phase and the non-production phase. A resolution procedure for the mixed-integer non-linear programming problem is proposed to determine the optimal values of four decision variables by minimizing the total cost function, which includes production costs. To illustrate the model, a numerical example is performed. Through this example, we can observe the importance of considering energy factors in the cost model of inventory systems.

Future research: incorporating additional energy-consuming components of a supply chain, such as warehousing and transportation; investigating more complex systems involving multi-level or multi-product aspects.

Resolution

Referring to Wu and Ouyang (2003), the objective functions can be rewritten as

$$TC_i(P, q, n, b) = \frac{1}{2q} \left\{ \left(\frac{H_2 B}{B + H_2} + H_1 X_a \right) (q - \sqrt{Z_{a,i}})^2 + (B + H_2) \left[b - \frac{H_2}{B + H_2} q \right]^2 \right\} + \left(\frac{H_2 B}{B + H_2} + H_1 X_a \right) \sqrt{Z_{a,i}} + M_i \quad (6)$$

where

$$M_i = \begin{cases} \left(\frac{W}{P} + K \right) DE, & \text{when } i = 0 \\ (W + KD)E, & \text{when } i = 1 \end{cases}$$

$$Z_{a,i} = \frac{2D(B + H_2)Y_{a,i}}{H_2 B + H_1 B X_a + H_1 H_2 X_a} > 0$$

$$X_a = n \left(1 - \frac{D}{P} \right) + \frac{2D}{P} - 1 > 0$$

$$Y_{a,i} = S_2 + \frac{S_1 i}{n} > 0$$

The optimal value of q and b can be yielded as

$$q_i^*(P, n) = \sqrt{Z_{a,i}} = \sqrt{\frac{2D(B + H_2)Y_{a,i}}{H_2 B + H_1 B X_a + H_1 H_2 X_a}} \quad (7)$$

$$b_i^*(P, n) = \frac{H_2}{B + H_2} q_0^* \quad (8)$$

(6) becomes

$$TC_i^*(P, n) = \sqrt{2D \left(S_2 + \frac{S_1 i}{n} \right)} \cdot \sqrt{\frac{H_2 B}{B + H_2} + H_1 \left[n \left(1 - \frac{D}{P} \right) + \frac{2D}{P} - 1 \right]} + M_i$$

Let

$$X_b = H_2 B + H_1 (B + H_2) \left(\frac{2D}{P} - 1 \right) \quad \text{and} \quad Y_b = H_1 (B + H_2) \left(1 - \frac{D}{P} \right)$$

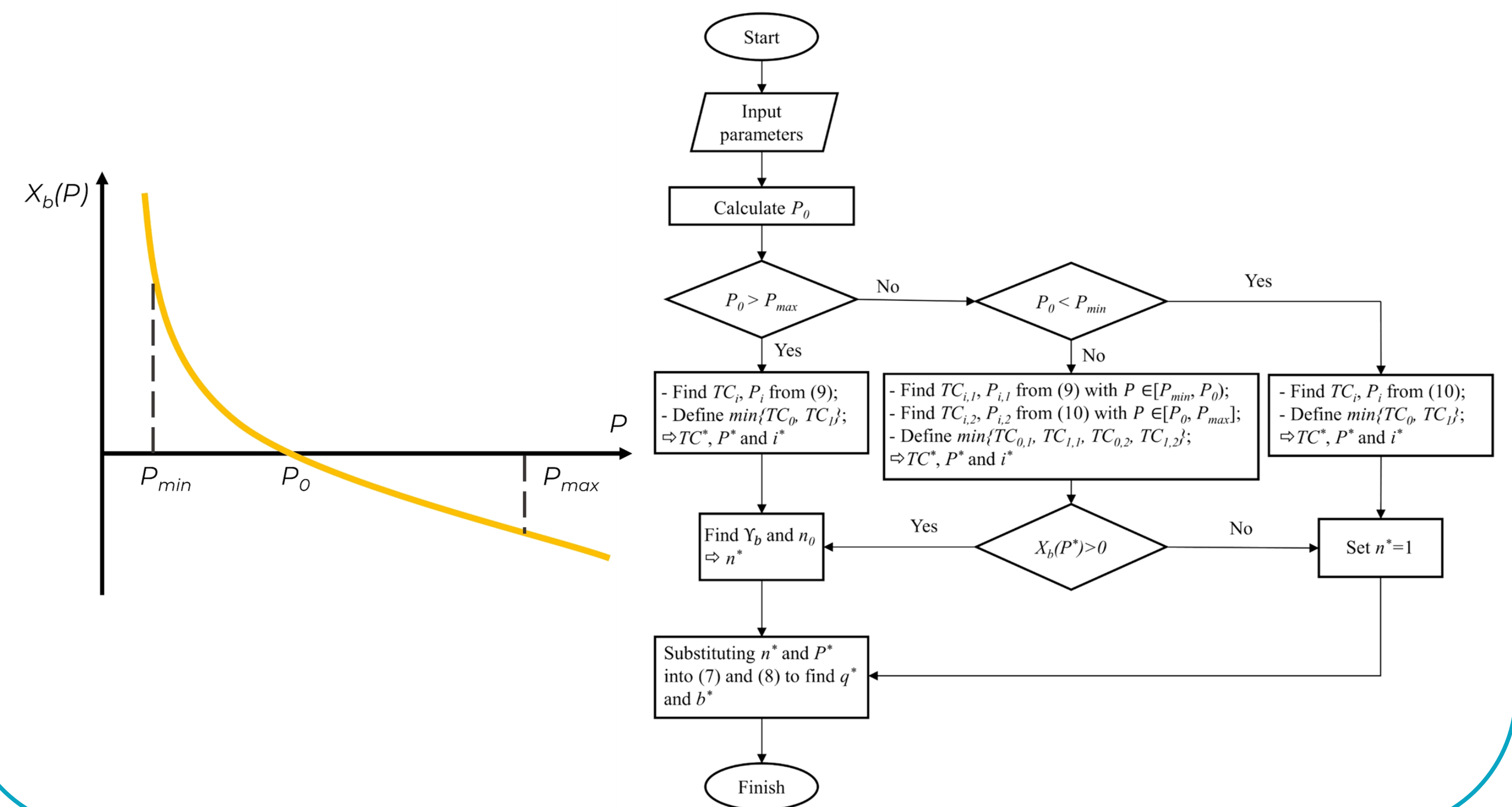
When $X_b > 0$: $n_i^* = \lceil n_{0,i} \rceil$ if $TC^*(\lceil n_{0,i} \rceil) \leq TC^*(\lfloor n_{0,i} \rfloor + 1)$; otherwise $n_i^* = \lfloor n_{0,i} \rfloor + 1$ where $n_{0,i} = \sqrt{S_{1,i} X_b / (S_2 Y_b)}$.

$$TC_i^*(P) = \sqrt{\frac{2D}{B + H_2} \left(S_2 X_b + S_{1,i} Y_b + 2 \sqrt{S_{1,i} S_2 X_b Y_b} \right)} + M_i \quad (9)$$

When $X_b \leq 0$: $n_i^* = 1$.

$$TC_i^*(P) = \sqrt{2D(S_{1,i} + S_2) \left(\frac{H_2 B}{H_2 + B} + H_1 \frac{D}{P} \right)} + M_i \quad (10)$$

Resolution procedure



References

- Nguyen, H.-N., Godichaud, M., Amodeo, L. (2023). Epq inventory model with backorders and energy implications. IFAC-PapersOnLine, 56(2), 8598-8603. 22nd IFAC World Congress.
- Zanoni, S., Bettoni, L., Glock, C. H. (2014). Energy implications in a two-stage production system with controllable production rates. International Journal of Production Economics, 149, 164-171.
- Wu, K. S., Ouyang, L. Y. (2003). An integrated single-vendor single-buyer inventory system with shortage derived algebraically. Production Planning and Control, 14(6), 555-561.
- Gutowski, T., Dahmus, J., & Thiriez, A. (2006). Electrical energy requirements for manufacturing processes. In 13th cirp international conference on life cycle engineering (Vol. 31, pp. 623-638).
- Nguyen, H.-N., Godichaud, M., Amodeo, L. (2023b). Impact of energy consumption in a production inventory model with price- and carbon emission-sensitive demand. In: 2023 9th International Conference on Control, Decision and Information Technologies (CoDIT), IEEE, pp. 1-6.
- Nguyen, H.-N., Godichaud, M., Amodeo, L. (2022). Economic production quantity model with energy consideration. In: 2022 IEEE International Conference on Industrial Engineering and Engineering Management (IEEM), IEEE, pp. 610-614.

Numerical instance

D	0.521	unit/h	t_{on}	0.01	h
S_1	400	€/setup	W	2	kW
S_2	25	€/order	F	2	
H_1	4.57e-04	€/unit.h	K	0.05	kWh
H_2	5.71e-04	€/unit.h	E	0.2	€/kWh
B	1.14e-03	€/unit.h	P	[1.042;2.604]	unit/h

Models	P^*	n^*	q^*	b^*	TC^*
Wu and Ouyang (2003)	1.667	3	177	59	0.931
This model					
Case $i = 0$	2.604	2	529.243	176.373	1.249
Case $i = 1$	1.042	6	222	0	4.436

Models	Inventory cost	Shortage cost	Energy cost	TC
Wu and Ouyang	0.557	0.011	1.255	1.82
This model	0.41	0.034	0.806	1.249
Δ	-26.4%	209.1%	-35.8%	-31.5%